

# JOYWAY BEACON

User manual v2.1

'Joyway Beacon' is a app, which can test and configure iBeacon and Eddystone produced by Shenzhen Joyway Technology Co., Ltd.

iBeacon broadcast UUID, Major Id, Minor Id information.

Eddystone broadcast UID, TLM and URL.

## Configurable parameters:

For iBeacon

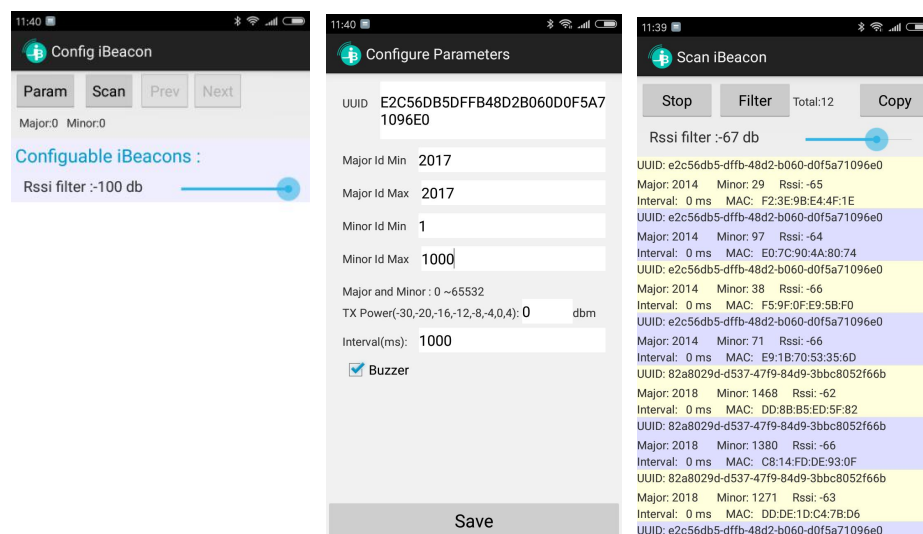
- (1) UUID, Major Id, Minor Id.
- (2) Transmit time interval, transmit power level.

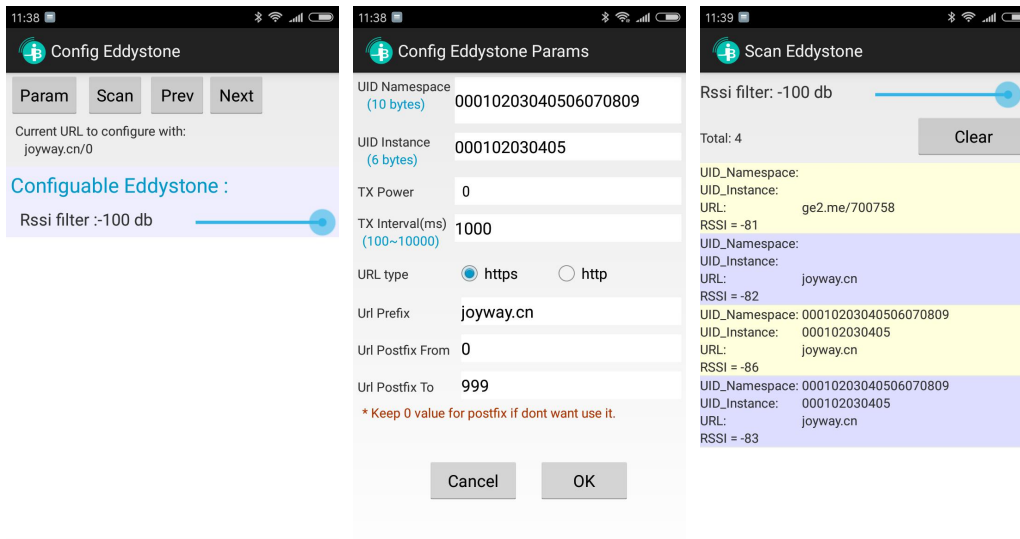
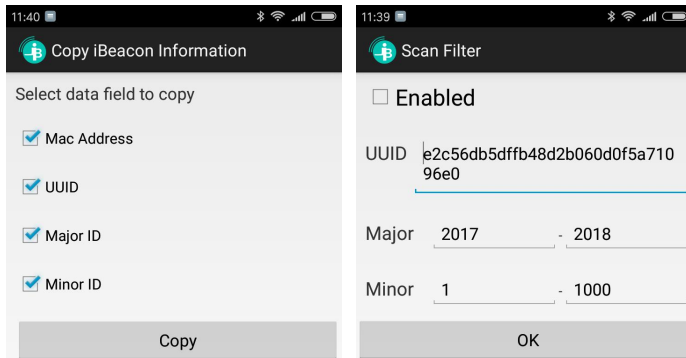
For Eddystone

- (1) UID, URL type, URL prefix, URL postfix.
- (2) TX Power, TX Interval.

## How to configure?

- (1) Remove the battery and install again, blue led light flash for one time. Which means it is configurable now. It will start iBeacon/Eddystone advertising automatically in 30 seconds if there is no configure operation.
- (2) Start 'Joyway Beacon' app in android phone, press 'Param' button to set new parameters. Press 'Scan' button to search nearby configurable iBeacon/Eddystone. Once the device is shown in the list. Press 'Connect' button in the item, then click 'Configure' button, after the led light 'double-flash', which means configure successfully, then click 'Disconnect' button. The device will start advertising immediately.





**How to start broadcasting after installing battery, without configuration?**

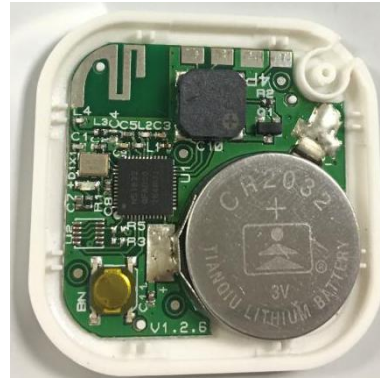
- (1) It will automatically start advertising in 30 seconds after installing battery.
- (2) The advertising will never stop until battery dies.

**How to install 'Joyway Beacon' app?**

- (1) Search 'Joyway Beacon' in Google Play market.

**NOTE:**

- (1) When install battery, please let the battery logo side up.



**(2) Do not power off the device during configuration.**

Any Feedback is appreciated.

Shenzhen Joyway Technology Co., Ltd.

[bob@joyway.cn](mailto:bob@joyway.cn)

2018-04-23