

# TagBeacon Datasheet

Model No.: JW1405BV134

V1.0

<b>Model</b>	<b>Description</b>
JW1405-9001A	TagBeacon, tile shape, IPX4 waterproof, 1 years battery life, white/black/green/pink, includes 1pc CR2032 coin battery, CE & RoHS & FCC-ID certification

The TagBeacon JW1405BV134 is a low energy Bluetooth® 4.2 digital broadcasting device, it is designed for the commercial advertising, indoor location-based service, event monitor, asset tracking etc.

The TagBeacon JW1405BV134 broadcasts standard iBeacon/Eddystone data at regular and adjustable intervals, it can be heard and interpreted by iOS and Android BLE-enabled devices that are equipped with many mobile apps. A BLE gateway can hear and communicate with TagBeacon JW1405BV134 too.

## FEATURES

- Programmed standard iBeacon/Eddystone firmware
- 1 years battery lifetime at default settings
- The max. 50 meters advertising distance
- Small size, user-friendly and portable
- Easy to print the logo on the center of top case



## CERTIFICATIONS

- iBeacon MFi License
- RoHS
- CE Regulations (Included EN300328/301489/60950/62479)
- FCC-ID

## SPECIFICATION

### Compatibility

- (1) Supported iOS 7.0+ and Android 4.3+ system;
- (2) Compatible with Apple iBeacon standard;
- (3) Compatible with other Bluetooth low energy devices;

### Power supply

- (1) Replaceable coin battery;
- (2) Advertise battery level in device name;

### Soft Reboot, OTA and J-Link

- (1) Support soft reboot;
- (2) Support DFU/OTA;
- (3) Reserved J-Link/SWD port on the board for programming;

### Interface

- (1) One button;
- (2) One Blue led light;
- (3) One Buzzer (optional);

### Configurable Parameters

- (1) Password, Device name, UUID, Major id, Minor id, TX power, Rssi at one meter, Advertising interval.

- (2) Configuration APP '[Joyway Beacon](#)';

[More downloads, click me.](#)

### Transmission Power Levels

- (1) available values: -20, -16, -12, -8, -4, 0, +4
- (2) unit: dBm

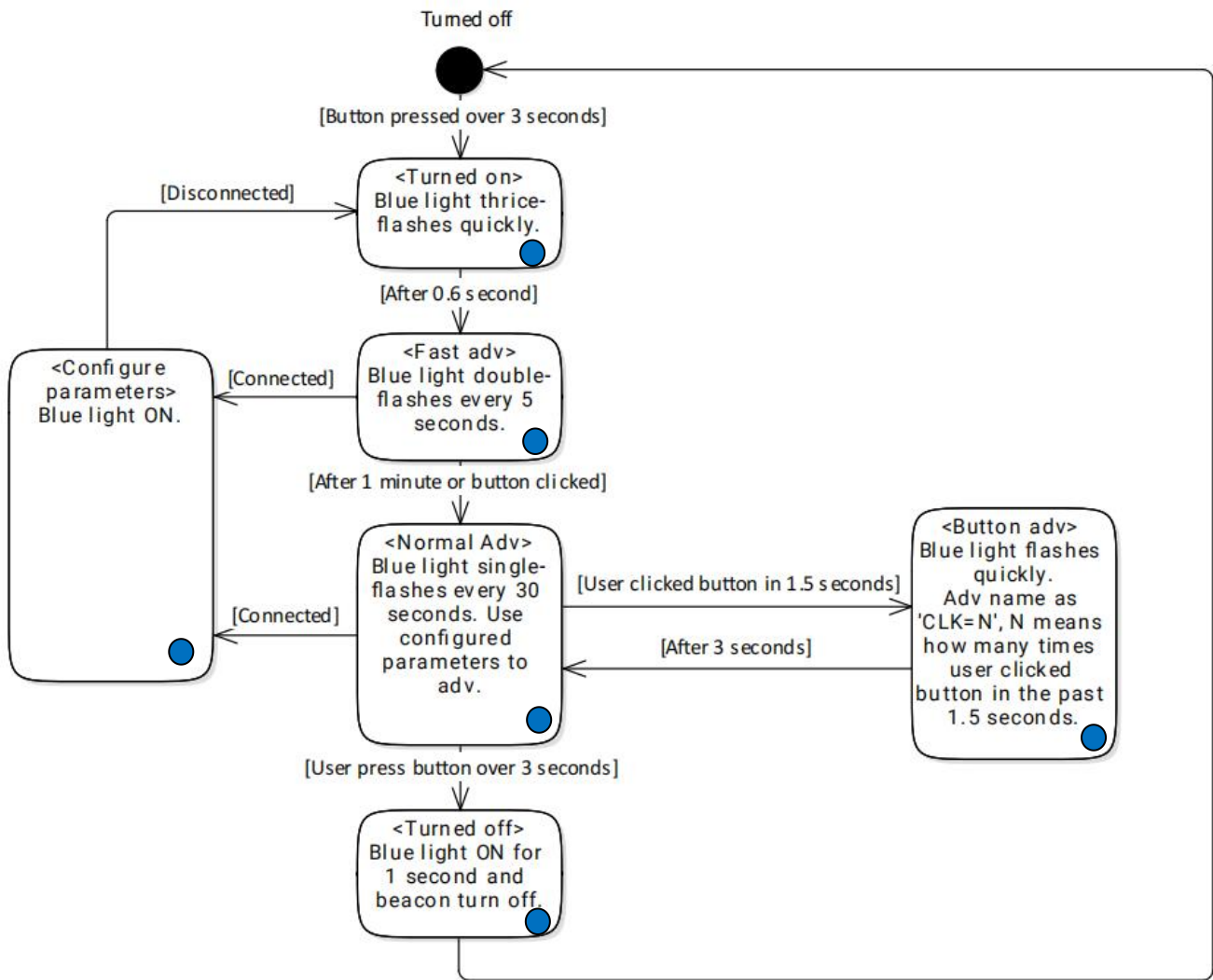
### Security

- (1) Need password while configuring;
- (2) AES HW encryption

### Installation

- (1) Key chain;  
Neck-string;

## State Machine



## CONFIGURABLE PARAMETERS

Item	Default Settings
UUID	0x59,0x1f,0xcd,0x82, 0xfd,0x55,0x46,0x0b, 0x86,0xd5,0x29,0x6b, 0x1b,0x1e,0x54,0x96
Major	2020~2022
Minor	0~65532
TX Power	0dBm
Transmission Interval	1000ms
Device Name	'JOYWAY' or Model number

## ELECTRONIC PARAMETERS

Item	Value	Remarks
Case Color	Black/Blue/White/Red	Customize color if $\geq 3000$ pcs
Battery Model	1 x CR2032	1pc CR2032 coin battery, 3.0V
Operation Voltage	1.8~3.6V	DC
Transmission Current	9.5 mA(Max.)	Test at 0dBm transmission power
Transmission Range	50 meters	Maximum
Antenna	50 ohm	On board / PCB Antenna
Net Weight	10.4 g	With battery
Size	38x38x7 mm	Null

## TECHNICAL SUPPORT

Item	Version	File Name	Update Date
Datasheet	V1.0	JW1405BV134_Datasheet.pdf	30 <sup>th</sup> May, 2022
SDK	V1.0	JoywayLib.Android.zip; JoywayLib.iOS.zip	30 <sup>th</sup> May, 2022
Configuration Tools	V1.3.8	JoywayBeacon.apk	30 <sup>th</sup> May, 2022

\* Files versions may be updated without notification.

## PACKING INFORMATION

Details	PP Bag	Carton
Quantity(JW1405)	1 pc	200 pcs
Net Weight	10.4 g	2.08 kg
Gross Weight	10.8 g	2.42 kg
Size	60x90x7.2 mm	260x150x180 mm

## DECLARATION

The contents of this datasheet are subject to change without prior notice for further improvement. Joyway team reserves the right to explain all the terms of this datasheet.

## CONTACT

Shenzhen Joyway Technologies Co., Ltd.

Email: [bob@joyway.cn](mailto:bob@joyway.cn)

<http://www.joyway.cn>