

JOYWAY™ SOS watch Instructions

This watch is connected to the user's mobile phone via Bluetooth. If the user double-clicks or long-presses the upper left button of the watch, the user's mobile phone will send a help text message to the preset emergency contact mobile phone. The text message contains the location information of the user's mobile phone. Clicking on the URL in the text message will automatically open the web page to view the map.

Schematic diagram:



Instructions

(1) Install Android APP, download URL:

http://www.joyway.cn/download/android_app/JoywayAlarm.apk



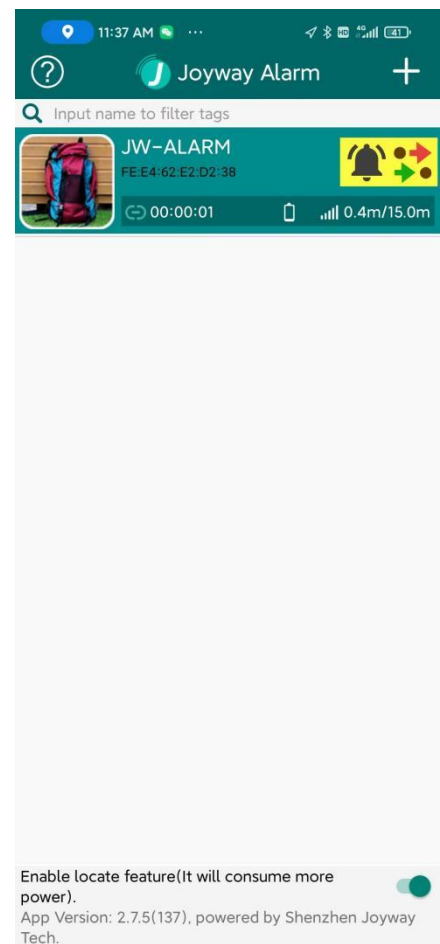
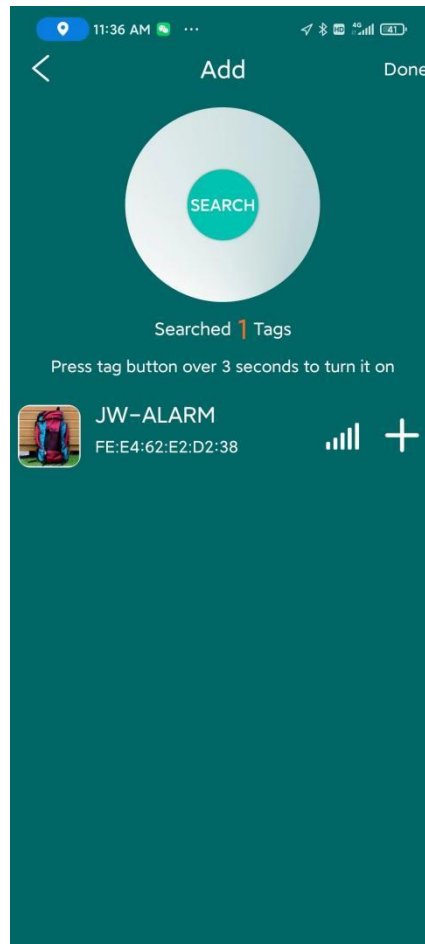
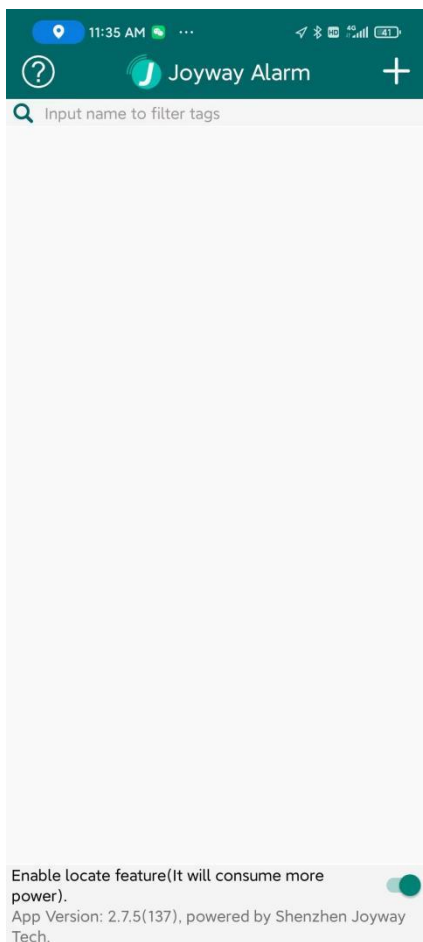
(2) Start the APP, add the watch to the APP, and enable the SOS help function.

* First turn on the Bluetooth and GPS positioning services of your phone, and then start the APP.

* All permissions of the APP need to be allowed. (SMS permission, Bluetooth permission)

* Put the watch close to the phone, open the APP, select Add in the upper right corner of the page, and the new page that pops up will display all nearby watches. Please click ⊕ add. Click Done to return to the main page, where you can see the watch you just added.

Shown in the picture below:

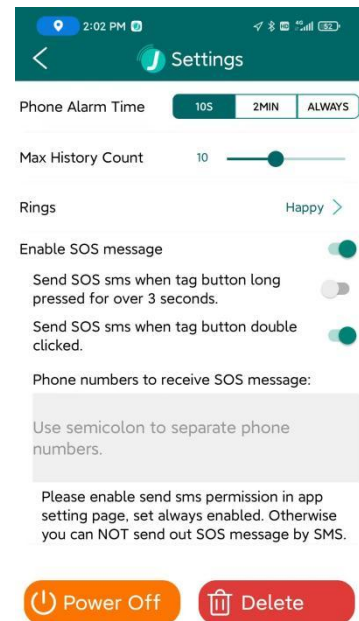
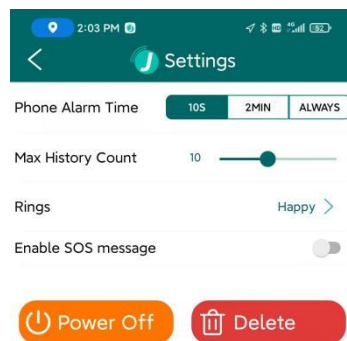


* Click on the added watch to enter the details page.

* Click the settings button to open the settings page, enable the SOS help function, and select "double-click the button" or "long press the button" to send a help text message to your emergency contact according to your personal habits, or you can choose both. Be sure to fill in your emergency contact mobile phone number. Please use English semicolons to separate multiple mobile phone numbers. Every mobile phone number you fill in can be answered.

(When you turn on the "SOS message" function, double-click the button in the upper left corner of the watch. This command will have two functions: finding the mobile phone and sending emergency text messages to the mobile phone. If you want to differentiate, you can choose to long press to send a text message to the emergency contact.)

Shown in the picture below:



Introduction to other functions:

(1) Remote photo taking

Turn on the photo taking function, click the watch button, and the phone will take a photo. The photo will be saved in the phone album.

(2) Lost reminder

When the watch is disconnected from the phone, the phone will play a ringtone.

(3) Find reminder

When the watch is reconnected to the phone, the phone will play a ringtone.

(4) Name the watch

Click the text below the watch photo, enter a new name, and click Done.

(5) Find phone

Double-click the watch button, and the phone will play a ringtone.

(6) Watch location record

When the watch is disconnected from the phone or exceeds the preset distance, the APP will automatically record the location on the map. Help you find the lost watch.

Bluetooth effective distance

Outdoor: 0-50 meters

Indoor: 0-15 meters

(Note that the effective distance of Bluetooth is affected by the user's environment, and the specific usage is subject to the user's actual usage)

Working frequency: 2.4GHz

Default transmit power: 0dBm

Operating system :

Bluetooth 4.0, Android 4.4 and above

This product uses one CR3032 button battery (new products have one built-in).

Please note that this is an electronic product for adults, not a children's toy.

Battery description: Non-rechargeable battery, not rechargeable.

Do not mix old and new batteries or different types of batteries, use only recommended batteries. Batteries should be replaced by an adult. When installing the battery, pay attention to the direction of the electrodes. When the battery is exhausted, remove the battery from the product. If this product is not used for a long time, it is recommended to remove the battery from the device. End-of-life electronics should be thrown into designated collection points for processing and recycling. For information about the recycling and disposal locations of waste electronics, please consult the relevant local departments. Product packaging may be retained for future reference.